



AT1

Asset GPS Tracker



GPS+WIFI+LBS positioning

Allow the location to be pinpointed in real time or periodically



Tamper alert

With light sensor, it will send alarm once disassembled or detects light



6000mAh battery

High capacity Li-ion battery ensuring sufficient power supply



Strong magnet

Strong magnetic cover allowing for flexible mounting on vehicles or assets



IP67 dust and water proof

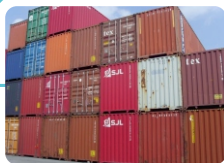
Water-resistant case to ensure stable operation in tough environment



Multiple alarms

Alarm will be triggered by sound, vibration, overspeed, power off, etc

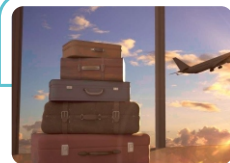
Application



Container



Vehicle tracking



Valuables

GSM Specification

GSM frequency	850/900/1800/1900 MHz
GPRS	Class 12, TCP/IP
Memory	32+32Mb
Phase error	RMSPE<5,PPE<20
Max output	GSM850/GSM900:33±3dBm GSM1800/GSM1900:30±3dBm
Max frequency error	±0.1ppm
Receive sensitivity	Class II RBER2%(-102dBm)

GPS Specification

GPS chipset	MTK high sensitivity chip
Frequency	L1,1575.42MHz C/A code
GPS channel	32
Location accuracy	<10 meters
Tracking sensitivity	-165dBm
Acquisition sensitivity	-148dBm
TTFF (open sky)	Avg. hot start≤1sec Avg. cold start≤32sec

Function & Package

Antenna	Built in GPS quad-band antenna, GPS ceramic antenna, WIFI antenna
LED	Power (red), GPS(blue),GSM(green)
Battery	6000mAh/3.7V Li-Polymer battery
Working voltage/current	3.7V/60mA
Standby time	25 days
Working time	100 hours (upload GPS data every 10 seconds)
Operating temperature	-20℃ ~70℃
Device weight	161g; 230g (with magnetic cover)
Device dimension	85.0 (L)×58.0 (W)×29.00(H)mm

Contact

Jimi IoT Co., Ltd.

Shenzhen Concox Information Technology Co., Ltd.

Add: 4/F, Building B, Gaoxinqi Industrial Park, Liuxian 1st Road, No.67 Bao'an District, Shenzhen

Tel: +86 755 6664 2520

Web: www.concox.com www.jimilab.com

Email: info@concox.cn info@jimilab.com